

PUBLIC WORKS

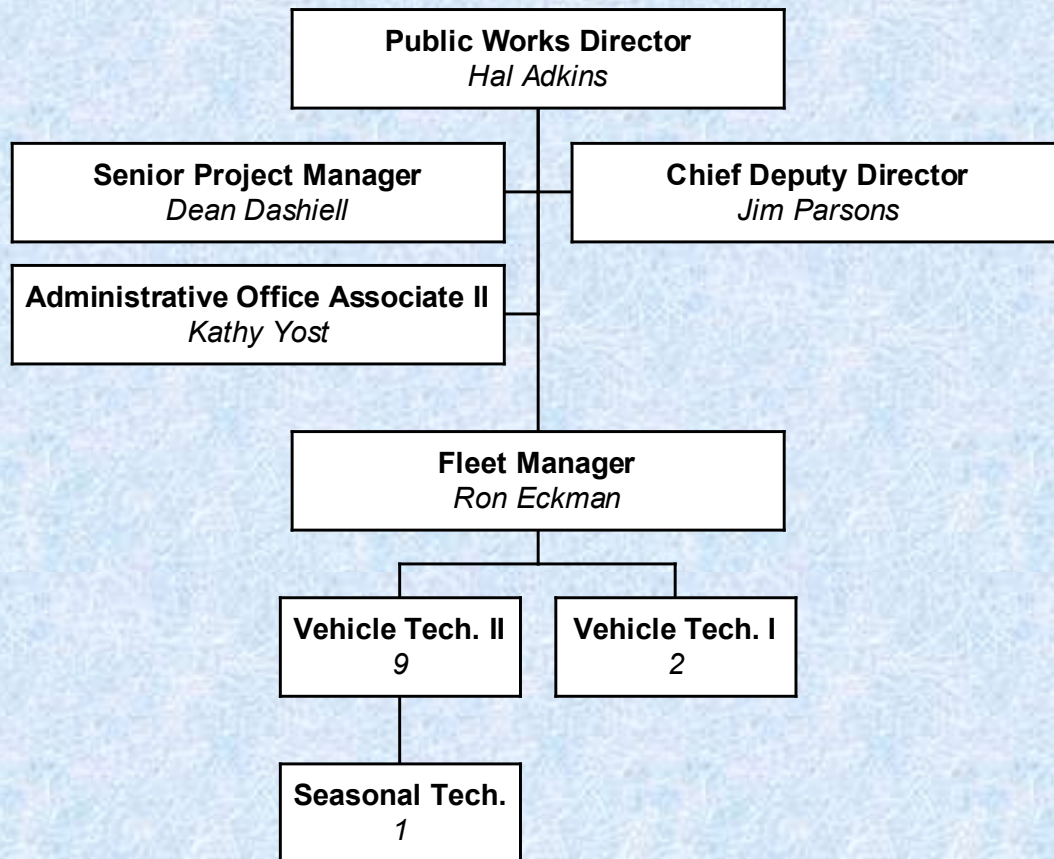
SERVICE CENTER BUDGET

“GARAGE DIVISION”

The Garage Division of the Service Center is responsible for maintaining all city vehicles and equipment; currently the city has in excess of 500 different pieces of equipment. Examples of vehicles and equipment worked on by the Garage are as follows:

- Ambulances
- Police Vehicles
- Tractor Trailers, Trash Trucks
- Buses, Handicap Vans, Trolleys, Boardwalk Trains
- Heavy Equipment (Tractors, Sweepers, Backhoes, Loaders)
- Trailers (Storage Trailers, Mobile Bleachers, Dump Trailers)
- Off Road Equipment (Excavators, Generators, ATV's, Forklifts, etc.)

SERVICE CENTER “GARAGE DIVISION” ORGANIZATIONAL CHART



Historically the Service Center had fourteen mechanics in the Fleet Garage

SERVICE CENTER BUDGET

	FY'19	FY'20	Difference
Service Center	\$1,253,828	\$1,255,893	+\$2,065

Labor Rates for Garage:

	<u>FY'19</u>	<u>FY'20</u>	<u>Difference</u>
Light Duty	\$67.00	\$67.00	\$0.00
Heavy Duty	\$86.00	\$86.00	\$0.00

Major Capital Purchases:

- Truck Tire Changer \$20,000